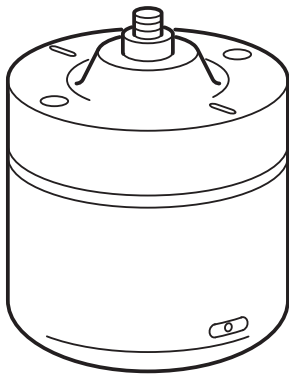


用户手册

LU MI

MARK I



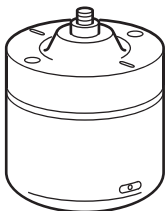
KINOFI



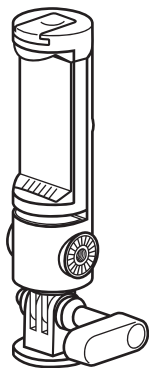
欢迎使用 LUMI MARK I。

用户手册版本：LUMI-MARK-I_CHS_190725

盒内物品清单



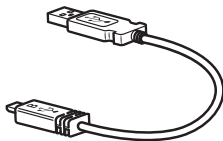
LUMI MARK I



手机夹

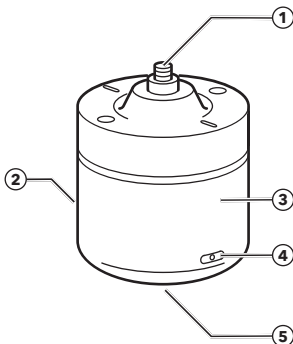


遥控器



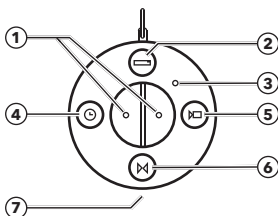
Micro USB 传输线

LUMI MARK I



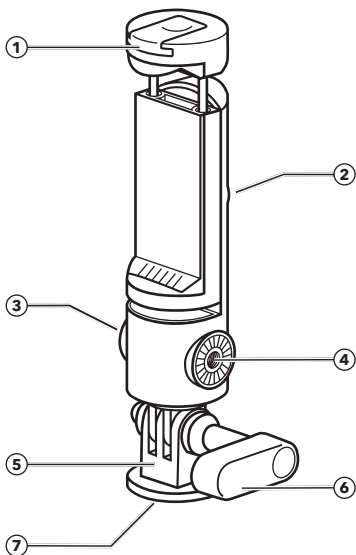
1. 通用1/4"相機接頭
2. 充電位置
3. 鋁金屬外殼
4. 開關鍵
5. 1/4" 螺絲接口

遙控



1. 左/右
2. 自動全景拍攝
3. 指示燈
4. 自動縮時拍攝
5. 錄影
6. 藍芽配对/面部追踪
7. 纽扣電池

手机夹



1. 热靴盖子

2. 1/4" 螺丝接口

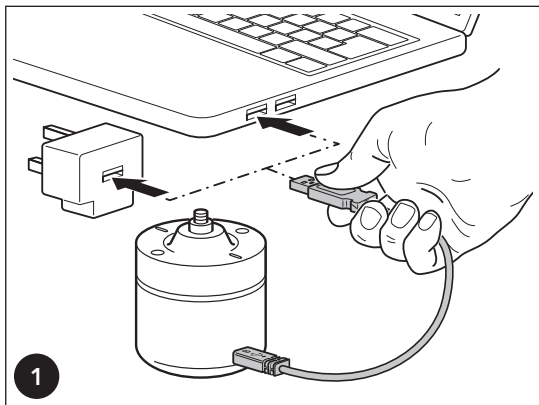
3. 1/4" 螺丝接口

4. 1/4" 螺丝接口

5. 角度控制组件

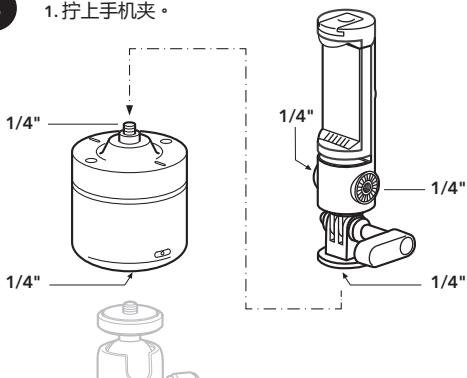
6. 手柄* (参考P.16)

7. 1/4" 螺丝接口

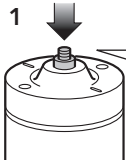


3

1. 拧上手机夹。



1



2



4

1. 牢固地按下手机夹并顺时针转动以锁定设备。
(类似于医药瓶的“安全”盖子)
2. 牢固地按下手机夹并逆时针转动以解锁设备。
(类似于医药瓶的“安全”盖子)

下载 Kinofi 应用程序



Kinofi 应用程序

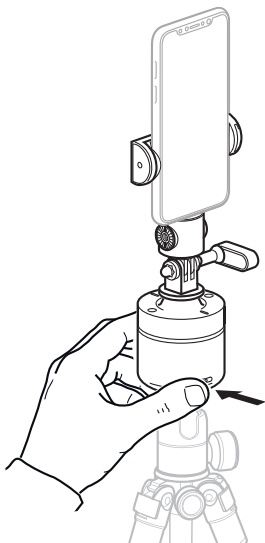


请使用行动装置在软体商店下载 **Kinofi** 应用程序。



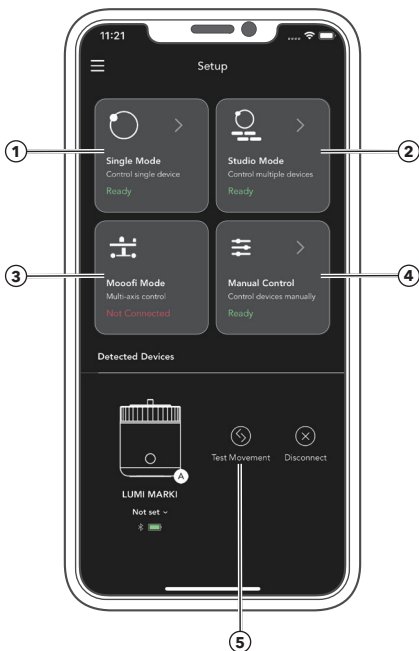
操作系统兼容性: 苹果iOS版本 9.0或更高版本;
安卓版本4.4或更高版本。

设置 LUMI MARK I



1. 开启智能手机的蓝牙，与 **LUMI MARK I** 配对
2. 按住 **LUMI MARK I** 的电源按钮两秒钟。
3. 与 **Kinofi** 应用程式配对后，蓝灯将保持常亮的状态。

连接应用程序和选择模式



连接应用程序

1. 打开 **Kinofi** 应用程序。该应用程序将自动扫描，並在“Detected Devices”下方显示已扫描到的 **Kinofi** 产品。
2. 通过按应用程序上的“Connect ”图标选择您的 **LUMI MARK I** 与 **Kinofi** 应用程序连接。
3. 按“Test movement ”图标测试您的设备，有移动代表已经成功连接应用程序。这是在连接最多五台设备时，识别设备的重要而简单的方法。
4. 成功连接应用程序后，现在可以在 **Kinofi** 应用程序上尝试不同的模式！

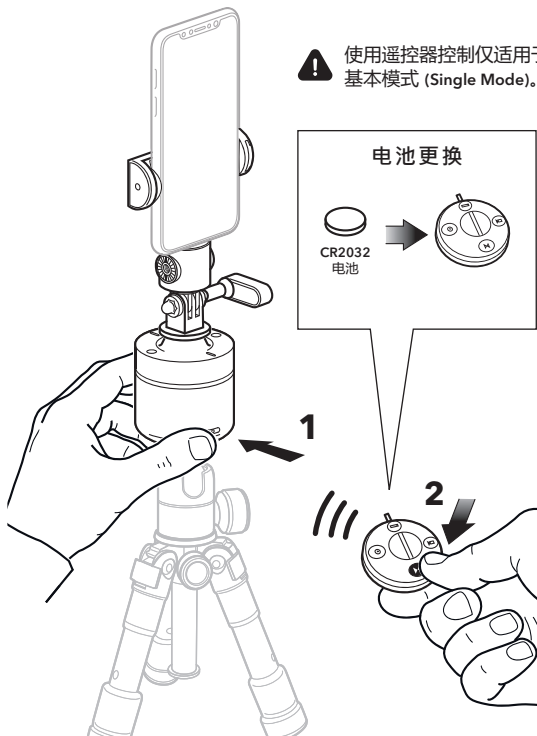
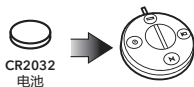
选择模式

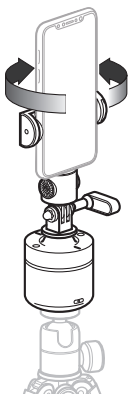
1. Single Mode
2. Studio Mode
3. Mooofi Mode
4. Manual Control
5. Test Movement

连接遥控器

! 使用遥控器控制仅适用于基本模式 (Single Mode)。

电池更换

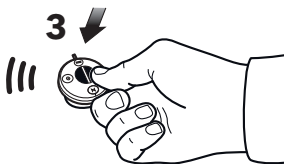





取消与遥控器配对

(参考 P.15)

* 与新遥控器配对时，
请使用此方法。



初次与遥控器配对*：

1. 确保 **LUMI MARK I** 已开启。常亮蓝色指示灯。
2. 按下遥控器上的“**蓝芽配对**  ”按钮两秒钟以配对设备。
配对后，**LUMI MARK I** 上的指示灯变为常亮粉红灯。

*按遥控器上的“**向左/向右**”按钮测试配对是否成功。

曾经与遥控器配对：

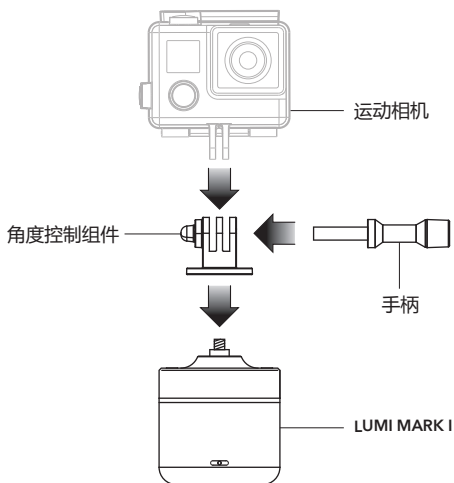
1. 确保 **LUMI MARK I** 已开启。按遥控器上的任意按钮激活遥控模式，指示灯将变为粉红色。

教学

请在官方网站观看教学视频。

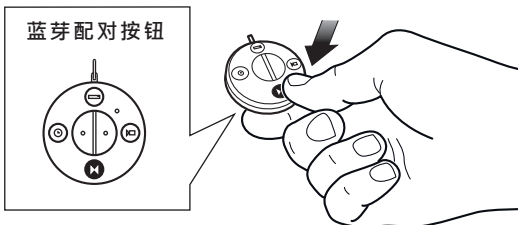



安装运动相机



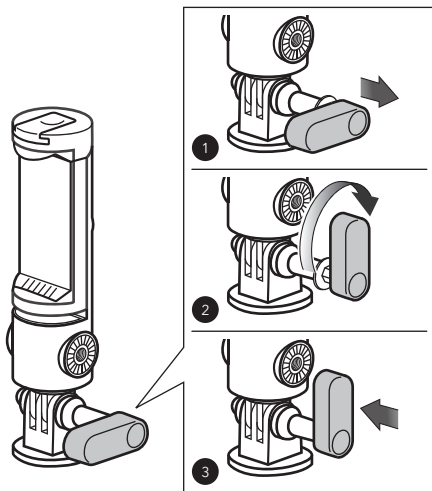
1. 完全拧下手柄。
2. 拆除手机夹。
3. 安装运动相机。
4. 将手柄牢牢拧紧。

取消与遥控器配对



1. 按住遥控器上的“**蓝牙配对**  ”按钮五秒钟。
2. 配对记录将被删除，**LUMI MARK I** 上的粉红色指示灯将变回蓝色。
3. 如要再次与遥控器配对，请重复遥控器配对步骤（参阅 P.11 - P.12）。

在不拧紧或松开的情况下
转换手柄的位置



1. 向外拉动手柄，然后旋转以调节手柄的位置。

注意事项

在公众场合上使用此产品时，请确保有人操作产品，切勿留下工作中的产品不顾而对公众造成伤害。

避免儿童接触本产品。

携带产品时，请将其与相机或三脚架等支撑设备分离。

不要用溶剂，稀释剂，苯或其他有腐蚀性的产品清洁本产品。

工作规格

工作温度范围：0°C (32°F) 至+40°C (104°F)

存储温度范围：-20°C (-4°F) 至+70°C (158°F)

高温：

避免温度超过+70°C (158°F)，同时不可让控制器长时间受日光曝晒，例如停在日照位置的车内。

电气注意事项：

禁止使用手册中未指定的电池或零件，禁止使用私自制造或改装的电池。

不要在产品及其附件，连接线，或任何机械及电子部件中插入金属物体或任何异物。

不要刮伤，割断或过分弯曲电源线，不要在电源线上放置沉重物品。

不要使用绝缘性受损的电线。

为了避免破坏绝缘性，不要将电线靠近任何发热源。

在使用说明书没有明确允许下，不要私自拆除或修改设备。

要触碰到连接线的电子接触点，因为它们会因而劳损，而使操作受到影响。

免责声明

本文档中的信息如有变更，恕不另行通知。

对本文档所含信息的任何错误，KINOFI 不提供任何保证，概不负责。

未经 KINOFI 明确批准的任何改动都可能使用户失去操作本设备的权限。

INFORMATION FOR USERS



In accordance with Article 10 of Directive 2012/19/UE of the 04/07/2012 concerning Waste Electrical and Electronic Equipment (WEEE).

The above symbol, also present on equipment, indicates that, at such time as the user should decide to dispose of the equipment, it must NOT be disposed of as unsorted municipal waste, but must be collected separately. The same applies to all components of the equipment and any recharge or refill elements that the product may comprise.

For information on the waste collection systems suitable for this equipment, contact KINOPI or any authorised member of the National Registers in EU countries. Household (or similar) waste may be disposed of via standard municipal differentiated waste collection schemes.

If you purchase a new version of this model or similar equipment - or if your existing equipment measures less than 25 cm - you may return the items you no longer require to your retailer who will take care of contacting the company or organization handling the proper collection and management of used equipment.

Correct separate collection and specific treatment of WEEE are necessary to avoid potential damage to human health and the environment, and favour the recycling and recovery of component materials.

Improper or illegal disposal of this product by the user will result in punishments or fines being applied in accordance with national Decrees based on Directive 91/156/EC and 2008/98/EC.

感谢您购买 KINOPI 产品。

KINOPI 产品确保适用于其设计目的，并无任何材料和工艺缺陷。本保修范围不覆盖人为损坏或者误用。标准有限保修的有效期限遵守产品销售所在国家州或者地区法律规定。请保留您的购买凭据以便保修。

FCC Statement

This device complies with part 15 of the FCC rules. Operation is subject to the following two conditions: (1) this device may not cause harmful interference, and (2) this device must accept any interference received, including interference that may cause undesired operation.



Changes or modifications not expressly approved by the party responsible for compliance could void the user's authority to operate the equipment.

NOTE: This equipment has been tested and found to comply with the limits for a Class B digital device, pursuant to part 15 of the FCC Rules. These limits are designed to provide reasonable protection against harmful interference in a residential installation. This equipment generates uses and can radiate radio frequency energy and, if not installed and used in accordance with the instructions, may cause harmful interference to radio communications. However, there is no guarantee that interference will not occur in a particular installation. If this equipment does cause harmful interference to radio or television reception, which can be determined by turning the equipment off and on, the user is encouraged to try to correct the interference by one or more of the following measures:

- Reorient or relocate the receiving antenna.
- Increase the separation between the equipment and receiver.
- Connect the equipment into an outlet on a circuit different from that to which the receiver is connected.
- Consult the dealer or an experienced radio/TV technician for help.

The device has been evaluated to meet general RF exposure requirement. The device can be used in portable exposure condition without restriction.

Model: LM01B

FCC ID: 2AJ2QIPANO360MARK1

Content of EU Declaration of Conformity



Responsible for placing the product on the market :

KINOFI Via 106A, Enterprise Place 5W, No. 5 Science Park West Avenue,
Hong Kong Science Park, Shatin, N.T., HK

Complies with the requirements of the following directives and
carries "CE" marking accordingly :

Radio Equipment Directive 2014/53/EC

EN 301 489-1 V2.1.1, Final draft EN 301 489-3 V2.1.1,
Draft EN 301 489-17 V3.2.0, EN 300 328 V2.1.1, EN 300 440 V2.1.1
EN 62479:2010,
EN 60950-1:2006+A11: 2009+ A1:2010+A12:2011 +A2:2013

RoHS directive 2011/65/EU

The product complies with Directive 2011/65/EU of the European
Parliament and of the Council of 8 June 2011 on the restriction of the use
of certain hazardous substances in electrical and electronic equipment.

保修条款

What does this limited warranty cover?

This Limited Warranty covers any defects in material or workmanship under normal use during the Warranty Period.

During the Warranty Period, KINOFI will repair or replace, at no charge, products or parts of a product that proves defective because of improper material or workmanship, under normal use and maintenance.

What will we do to correct problems?

KINOFI will repair the Product at no charge, using either new or refurbished replacement parts.

How long does the coverage last?

The Warranty Period for Physical Goods purchased from KINOFI is 2 years, from the date of purchase.

A replacement Physical Good or part assumes the remaining warranty of the original Physical Good from the date of replacement or repair, whichever is longer.

What does this limited warranty not cover?

This Limited Warranty does not cover any problem that is caused by: Conditions, malfunctions or damage not resulting from defects in material or workmanship

What do you have to do?

To obtain warranty service, you must first contact us to determine the problem and the most appropriate solution for you. kinofi.com/support/

联系我们

事无巨细，
欢迎随时与我们联络。



Unit 106A, 1/F, Enterprise Place 5W, No. 5 Science
Park West Avenue, Hong Kong Science Park,
Shatin, N.T., Hong Kong

新界沙田香港科學園科技大道西5號
5W企業廣場1樓106A室

kinofi.com



KINOfl

用户手册版本：LUMI-MARK-I_CHS_190725



Copyright © 2019 INNOPLAY LIMITED. All right reserved.